



**Westview Builders**

Building with You

**THE MARMION**

**AREAS**

GROUND FLOOR - 120.60m<sup>2</sup>

GARAGE - 42.93m<sup>2</sup>

ALFRESCO - 17.50m<sup>2</sup>

UPPER FLOOR - 127.80m<sup>2</sup>

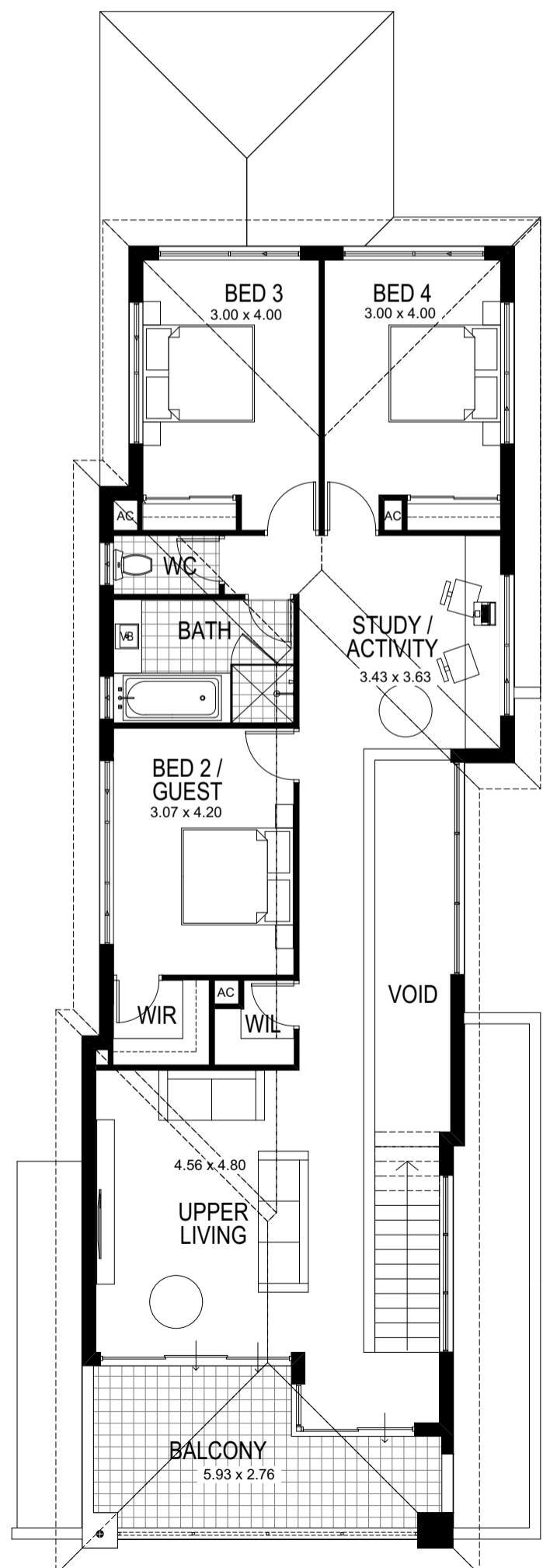
BALCONY - 15.31m<sup>2</sup>

PORCH - 6.73m<sup>2</sup>

**TOTAL = 330.87m<sup>2</sup>**



**GROUND STOREY PLAN 1:100**



**UPPER STOREY PLAN 1:100**